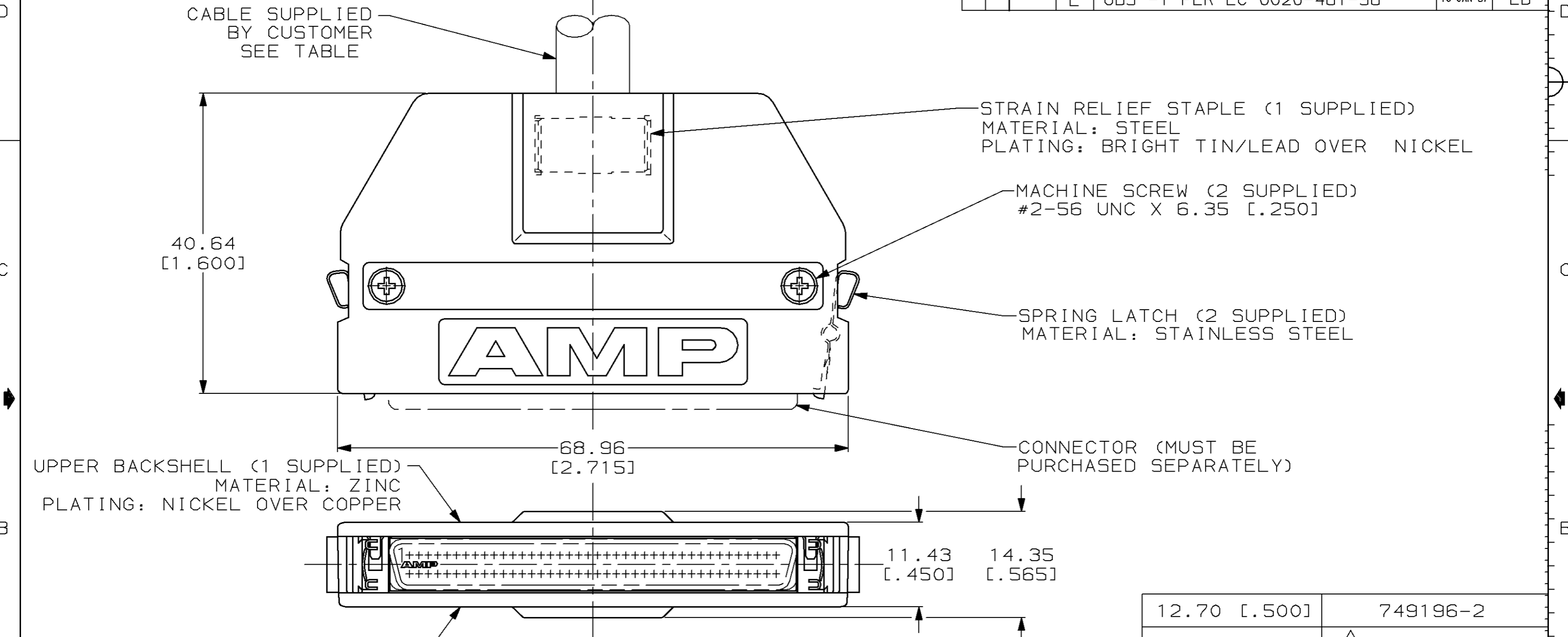


THIS DRAWING IS UNPUBLISHED. RELEASED FOR PUBLICATION, 19  
 © COPYRIGHT 19 BY AMP INCORPORATED. ALL INTERNATIONAL RIGHTS RESERVED.

| LOC | DIST | P | F | ZONE | LTR | DESCRIPTION               | DATE      | APPD |
|-----|------|---|---|------|-----|---------------------------|-----------|------|
| BD  | 95   |   |   |      | D   | ADDED -2 PER NPR 3466     | 05/02/91  | -    |
|     |      |   |   |      | E   | OBS -1 PER EC 0020-481-96 | 10 JAN 97 | LB   |



LOWER BACKSHELL (1 SUPPLIED)  
 MATERIAL: ZINC PLATING: NICKEL OVER COPPER

1 OBSOLETE PART NUMBER.

|               |            |
|---------------|------------|
| 12.70 [.500]  | 749196-2   |
| 10.67 [.420]  | 1 749196-1 |
| MAX CABLE DIA | PART NO    |

|   |                             |
|---|-----------------------------|
| DO NOT SCALE PRINT. UNLESS SPECIFIED DIMENSIONS IN mm [INCHES] TOLERANCES ON: | DR 12-20-88 M.A. McCAFFREY  |
| 2 PLC DEC ± -   | CHK 12-20-88 M.E. SHIRK     |
| 3 PLC DEC ± 0.38 [.015]   | APPD 12-20-88 J. BROSCARD   |
| ANGLES ± -  | APPD 12-20-88 C.E. REYNOLDS |
| MATERIAL -  | PRODUCT SPEC -              |
| FINISH -  | APPLICATION SPEC -          |
|   | WEIGHT -                    |

|   |                  |   |
|---|------------------|---|
| <b>AMP</b>  |                  | AMP INCORPORATED<br>Harrisburg, Pa. 17105 |
| NAME<br>INDIVIDUAL KIT, UNASSEMBLED, 80 POSITION, STRAIGHT EXIT, UNKEYED, AMPLIMITE .050 Series |                  |   |
| SIZE<br><b>B</b>  | FSCM NO<br>00779 | DRAWING NO<br>749196                      |
| SCALE<br>2:1  | SHEET<br>1 OF 1  |   |